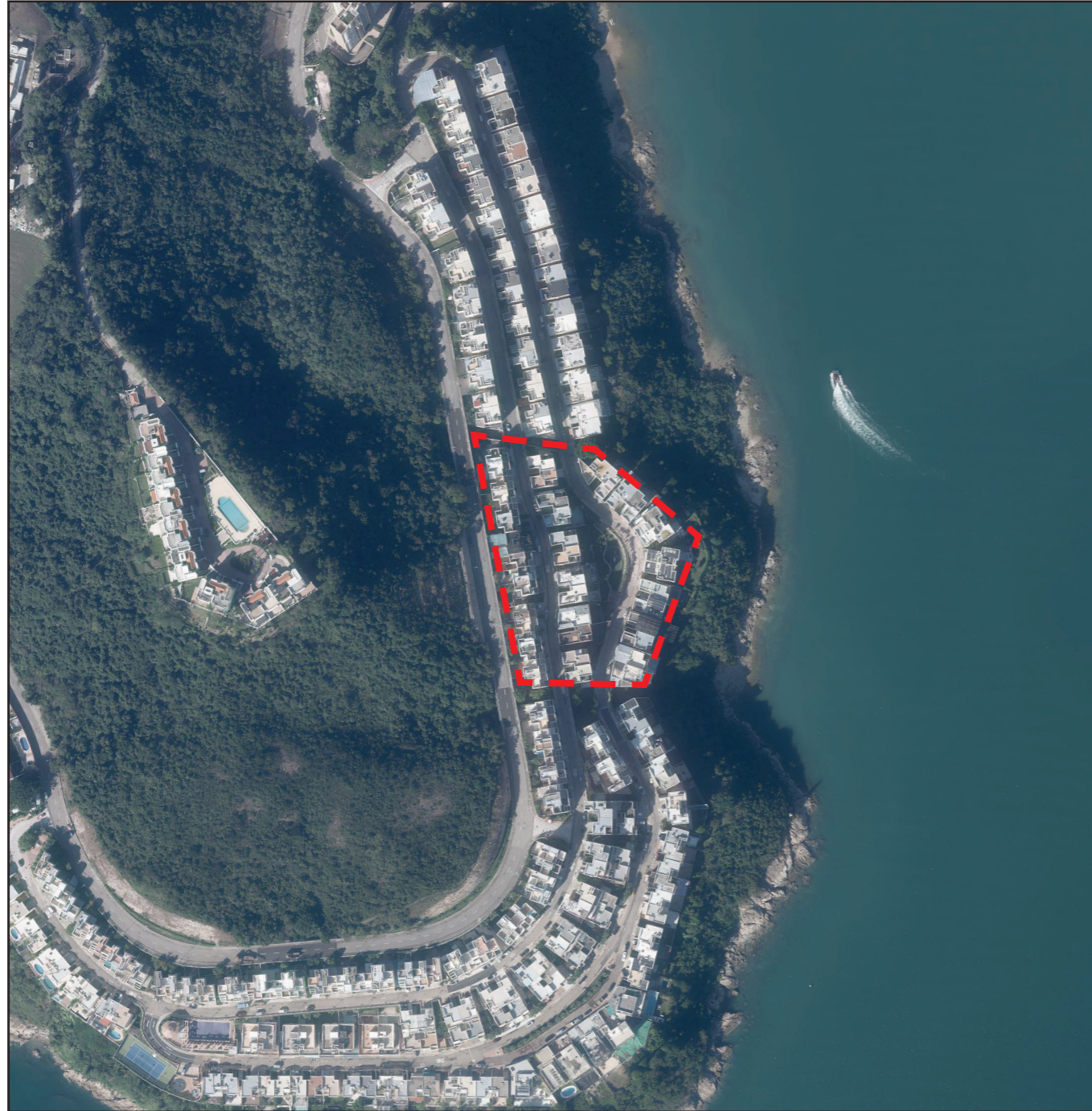



期數的鳥瞰照片

AERIAL PHOTOGRAPH OF THE PHASE



 期數所在位置
Location of the Phase

資料來源：

摘錄自地政總署測繪處於2022年11月29日在6,900呎飛行高度拍攝之鳥瞰照片，編號為E166268C。

Source of information:

Adopted from part of the aerial photograph taken by the Survey and Mapping Office of the Lands Department at a flying height of 6,900 feet, photo No. E166268C, dated 29th November 2022.

香港特別行政區政府地政總署測繪處©版權所有，未經許可，不得複製。
Survey and Mapping Office, Lands Department, The Government of HKSAR
© Copyright reserved - reproduction by permission only.

備註：
因技術原因(例如期數之不規則形狀)，
鳥瞰照片所顯示之範圍多於《一手住宅
物業銷售條例》所要求。

Remark:
Due to technical reasons (such as the irregular shape of the Development), the aerial
photograph shows more than the area required under the Residential Properties
(First-hand Sales) Ordinance.