


期數的鳥瞰照片

AERIAL PHOTOGRAPH OF THE PHASE



 期數所在位置
Location of the Phase

資料來源：

摘錄自地政總署測繪處於2022年2月15日在3,000呎飛行高度拍攝之鳥瞰照片，編號為E150014C。

Source of information:

Adopted from part of the aerial photo taken by the Survey and Mapping Office of the Lands Department at a flying height of 3,000 feet, photo No. E150014C, dated 15th February 2022.

香港特別行政區政府地政總署測繪處©版權所有，未經許可，不得複製。
Survey and Mapping Office, Lands Department, The Government of HKSAR
© Copyright reserved - reproduction by permission only.

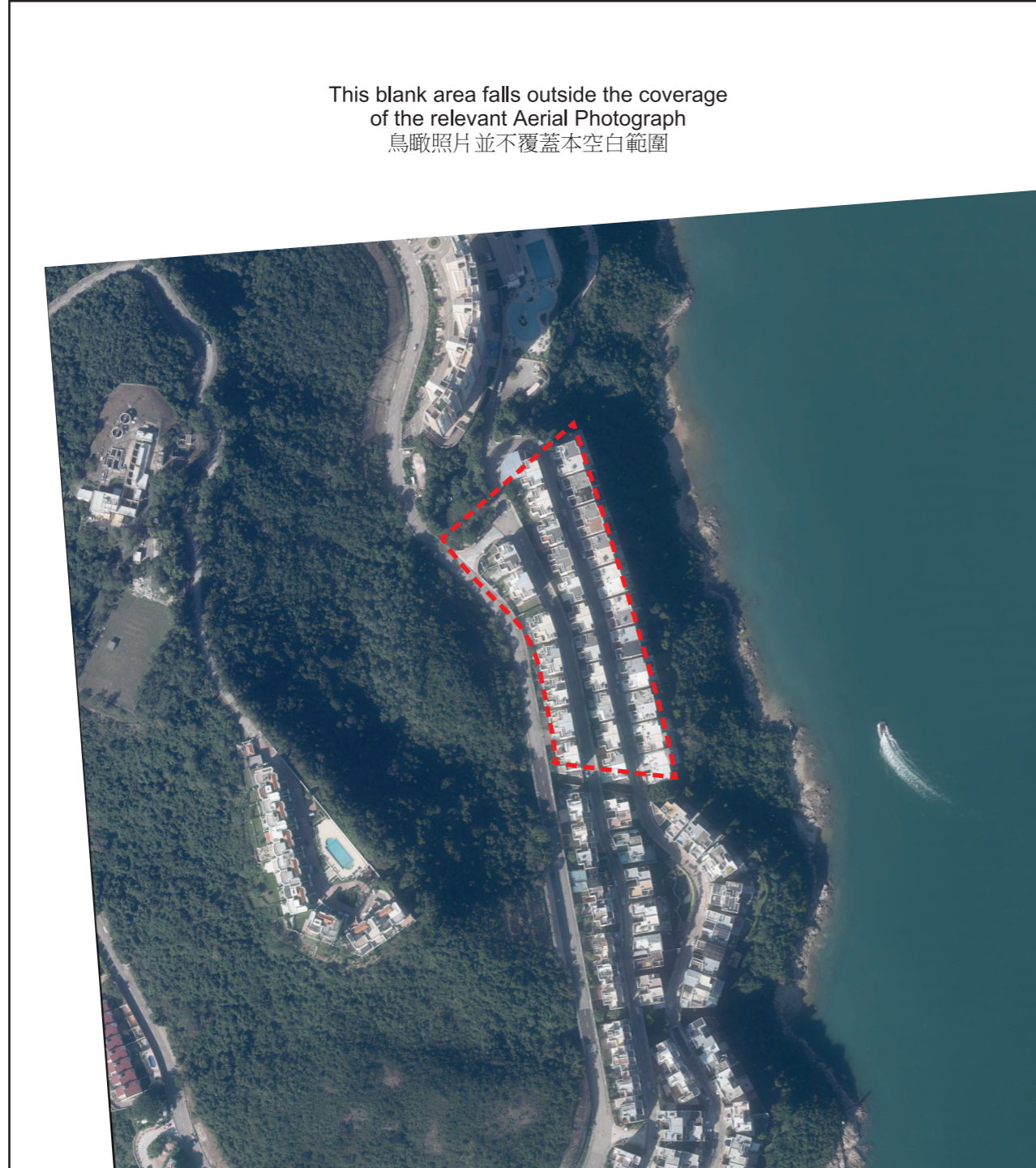
備註：
因技術原因（例如期數之不規則形狀），鳥瞰照片所顯示之範圍多於《一手住宅物業銷售條例》所要求。


Remark :
Due to technical reasons (such as the irregular shape of the Phase), the aerial photograph shows more than the area required under the Residential Properties (First-hand Sales) Ordinance.

期數的鳥瞰照片

AERIAL PHOTOGRAPH OF THE PHASE

This blank area falls outside the coverage
of the relevant Aerial Photograph
鳥瞰照片並不覆蓋本空白範圍



 期數所在位置
Location of the Phase

資料來源：

摘錄自地政總署測繪處於2022年11月29日在6,900呎飛行高度拍攝之鳥瞰照片，編號為E166268C。

Source of information:

Adopted from part of the aerial photo taken by the Survey and Mapping Office of the Lands Department at a flying height of 6,900 feet, photo No. E166268C, dated 29th November 2022.

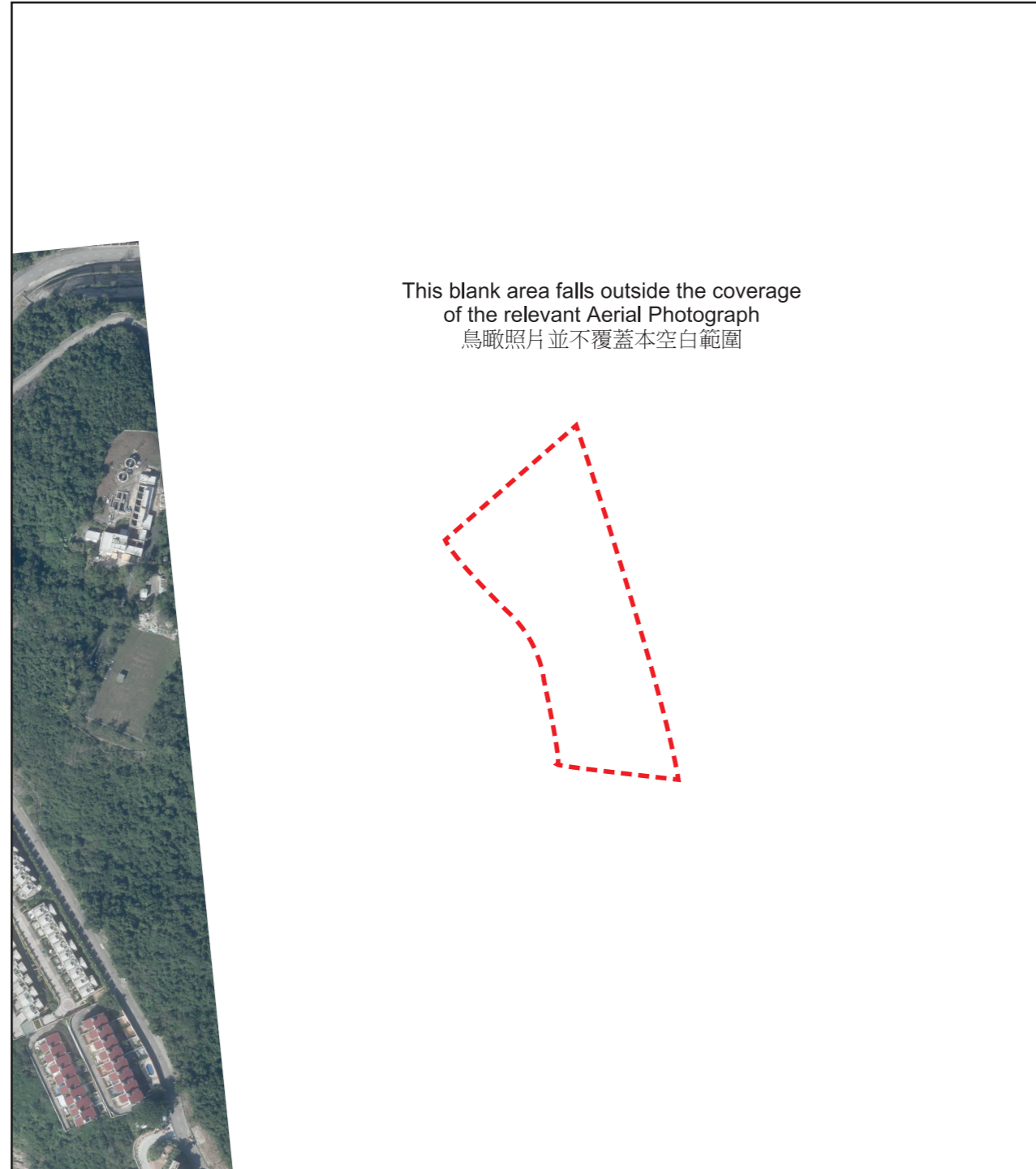
香港特別行政區政府地政總署測繪處©版權所有，未經許可，不得複製。
Survey and Mapping Office, Lands Department, The Government of HKSAR
© Copyright reserved - reproduction by permission only.


備註：
因技術原因（例如期數之不規則形狀），鳥瞰照片所顯示之範圍多於《一手住宅物業銷售條例》所要求。

Remark :
Due to technical reasons (such as the irregular shape of the Phase), the aerial photograph shows more than the area required under the Residential Properties (First-hand Sales) Ordinance.

期數的鳥瞰照片

AERIAL PHOTOGRAPH OF THE PHASE



 期數所在位置
Location of the Phase

資料來源：

摘錄自地政總署測繪處於2022年11月29日在6,900呎飛行高度拍攝之鳥瞰照片，編號為E166271C。

Source of information:

Adopted from part of the aerial photo taken by the Survey and Mapping Office of the Lands Department at a flying height of 6,900 feet, photo No. E166271C, dated 29th November 2022.

香港特別行政區政府地政總署測繪處©版權所有，未經許可，不得複製。
Survey and Mapping Office, Lands Department, The Government of HKSAR
© Copyright reserved - reproduction by permission only.

備註：
因技術原因（例如期數之不規則形狀），鳥瞰照片所顯示之範圍多於《一手住宅物業銷售條例》所要求。

Remark :
Due to technical reasons (such as the irregular shape of the Phase), the aerial photograph shows more than the area required under the Residential Properties (First-hand Sales) Ordinance.